

# FLORAL EXPOSITIONS

PROFESSIONAL FLORAL DESIGNS A-Z: ORDER ON PAGE 6



**A1**  
4" round  
**\$35.00 each**



**A2**  
4" round  
**\$35.00 each**



**A3**  
4" square  
**\$35.00 each**



**B**  
5" tall x 4" wide  
**\$45.00 each**



**C**  
6" tall x 5" wide  
**\$60.00 each**



**D**  
6" tall x 5" wide  
**\$65.00 each**



**E**  
6" tall x 5" wide  
**\$65.00 each**



**F1**  
6" tall x 4" wide  
**\$45.00 each**



**F2**  
6" tall x 4" wide  
**\$45.00 each**



**G1**  
6" tall x 5" wide  
**\$50.00 each**



**G2**  
6" tall x 5" wide  
**\$50.00 each**



**G3**  
6" tall x 5" wide  
**\$50.00 each**



**H**  
10-14" tall x 5-6" wide  
**\$65.00 each**



**I1**  
7" tall x 5-6" wide  
**\$85.00 each**



**I2**  
7" tall x 7-8" wide  
**\$85.00 each**



**J**  
16-18" tall x 10" wide  
**\$95.00 each**

Please note seasonal adjustments may apply to the above arrangements.  
Customized floral arrangements are also available for your Booth, Hospitality Suite, Off-site Functions and Banquets.  
Please reach out to our design team to get a quote!

**\*Discount pricing only applies to orders received and paid in full thirty days prior to Exhibitor Move In**

# FLORAL EXPOSITIONS

PROFESSIONAL FLORAL DESIGNS A-Z: ORDER ON PAGE 6



**K**

8" tall x 8" wide  
**\$85.00 each**



**L**

12" tall x 10-12" wide  
**\$85.00 each**



**M**

10" tall x 10" wide  
**\$95.00 each**



**N**

12" tall x 10-12" wide  
**\$95.00 each**



**O**

12" tall x 12-14" wide  
**\$125.00 each**



**P**

12" tall x 10-12" wide  
**\$125.00 each**



**Q**

12" tall x 10-12" wide  
**\$135.00 each**



**R**

14-16" tall x 6" wide  
**\$135.00 each**



**S**

16-18" tall x 6" wide  
**\$95.00 each**



**T**

16-18" tall x 8" wide  
**\$135.00 each**



**U**

16-18" tall x 8" wide  
**\$135.00 each**



**V**

16-18" tall x 10" wide  
**\$150.00 each**



**W**

18-20" tall by 12" wide  
**\$135.00 each**



**X**

14" tall x 6" wide  
**\$120.00 each**



**Y**

14" tall x 6" wide  
**\$120.00 each**



**Z**

20-24" tall x 16-18" wide  
**\$175.00 each**

Please note seasonal adjustments may apply to the above arrangements.

**\*Discount pricing only applies to orders received and paid in full thirty days prior to Exhibitor Move In**



# FLORAL EXPOSITIONS

GREEN PLANTS 3' - 8': ORDER ON PAGE 6



2-3'  
Arb



2 - 3'  
Spath



2 - 3'  
Palm



2 - 3'  
Snake Plant



2-3'  
Croton



4 - 6'  
Areca Palm



4 - 6'  
Bamboo Palm



5 - 6'  
Ficus Tree



5 - 6'  
Fiddle Fig Tree



8 - 10'  
Andonidia Palm

*\*Discount pricing only applies to orders received and paid in full thirty days prior to Exhibitor Move In*

# FLORAL EXPOSITIONS

BLOOMING, FERNS, IVY & POTHOS: ORDER ON PAGE 6



Fern



Ivy



Pothos



Kalanchoe



Bromeliads

SPECIALTY DESIGNS : ORDER ON PAGE 7



**Option 1**

Colorful blooming potted in 42" long white planter  
(total height about 14" - 16")



**Option 2**

3' Green plant  
potted in 30" tall  
square planter



**Option 3**

2' Snake plant  
potted in 30" tall  
square planter



**Option 4**

3' Green plants potted in  
40" long rectangular planter  
(total height about 4.5')



**Option 5**

2' Snake plants potted in  
40" long rectangular planter  
(total height about 4')



**Option 6**

4' tall x 4' wide Faux  
Boxwood Hedge



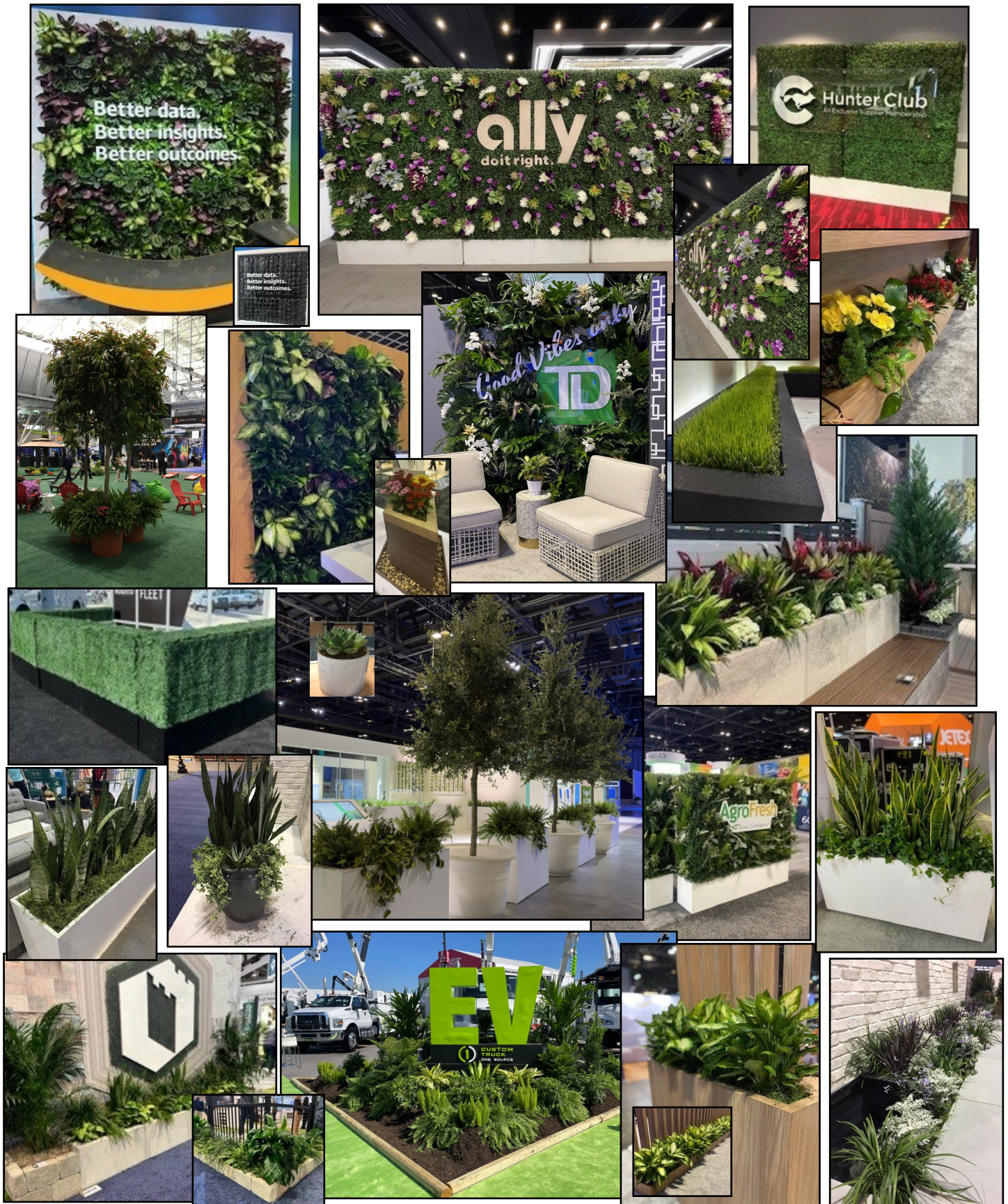
**Option 7**

7' tall x 4' wide Faux  
Boxwood Hedge

*\*Discount pricing only applies to orders received and paid in full thirty days prior to Exhibitor Move In*



## CONTACT OUR DESIGN TEAM FOR CONCEPT DESIGNS



*\*Discount pricing only applies to orders received and paid in full thirty days prior to Exhibitor Move In*



<b><u>PROFESSIONAL FLORAL</u></b>	<b>Option A TO Z</b>	Cost on page one will increase 20% thirty days prior to move in	<b>Quantity</b>	<b>Total</b>
<b>FRESH FLORAL (A to Z)</b>				
<b>FRESH FLORAL (A to Z)</b>				
<b>FRESH FLORAL (A to Z)</b>				
<b>Custom Fresh Floral Design</b> (Include picture, color scheme and size)				
<b>Custom Fresh Floral Design</b> (Include picture, color scheme and size)				
<b>Clear Bubble Bowl</b>	<b>For Business Cards</b>	\$30.00		

**Customized floral arrangements for hospitality suites, luncheons and banquets available.  
Please reach out to our design team to get a quote!**

<b><u>GREEN PLANTS</u></b>	<b>Plant Type if applicable</b>	<b>*Discount Price</b>	<b>Standard Price</b>	<b>Quantity</b>	<b>Total</b>
<b>2' - 3' GREEN PLANT</b>		\$50.00	\$60.00		
<b>4' GREEN PLANT</b>		\$60.00	\$75.00		
<b>5' GREEN PLANT</b>		\$75.00	\$92.00		
<b>6' GREEN PLANT</b>		\$85.00	\$105.00		
<b>8' - 10' ANDONIDIA PALM</b>		\$20 a foot	\$25 a foot		

**Standard containers come with all plant orders. Indicate preference: Black \_\_\_\_\_ White \_\_\_\_\_**  
Please Call for Specialty Requirements on Exterior Plants, Large Trees, Topiaries and More

<b><u>LOW PLANTS</u></b>	<b>Preferred Color if applicable</b>	<b>*Discount Price</b>	<b>Standard Price</b>	<b>Quantity</b>	<b>Total</b>
<b>FERNS</b>		\$38.00	\$45.00		
<b>IVY</b>		\$38.00	\$45.00		
<b>POTHOS</b>		\$38.00	\$45.00		
<b>KALANCHOES</b>		\$35.00	\$45.00		
<b>BROMELIADS</b>		\$35.00	\$45.00		

**\*Seasonal Blooming Available**

<b><u>UPGRADED PLANTER OPTIONS</u></b>		<b>*Discount Price</b>	<b>Standard Price</b>	<b>Quantity</b>	<b>Total</b>
<b>30" Tall White Square Urn</b>	Use 3'-4' Green Plants, Blooming or Fresh Floral to fill planters. Price does not include plants.	\$100.00	\$150.00		
<b>30" Tall Black Square Urn</b>		\$100.00	\$150.00		
<b>40" Long White Planter</b>		\$150.00	\$200.00		
<b>40" Long Black Planter</b>		\$150.00	\$200.00		

**Please pre-order to insure availability**

*\*Discount pricing only applies to orders received and paid in full thirty days prior to Exhibitor Move In*

<b><u>SPECIALTY DESIGNS</u></b>		<b>*Discount Price</b>	<b>Standard Price</b>	<b>Quantity</b>	<b>Total</b>
<b>COLORFUL BLOOMING IN WHITE LOW RECTANGULAR PLANTER</b>	OPTION 1	\$300.00	\$375.00		
<b>3' GREEN PLANT IN 30" TALL BLACK OR WHITE PLANTER</b>	OPTION 2	\$160.00	\$210.00		
<b>SNAKE PLANT IN 30" TALL BLACK OR WHITE PLANTER</b>	OPTION 3	\$160.00	\$210.00		
<b>3' GREEN PLANTS IN BLACK OR WHITE RECTANGULAR PLANTER</b>	OPTION 4	\$325.00	\$400.00		
<b>SNAKE PLANTS IN BLACK OR WHITE RECTANGULAR PLANTER</b>	OPTION 5	\$325.00	\$400.00		
<b>4'x 4' FAUX BOXWOOD HEDGE</b>	OPTION 6	\$550.00	\$675.00		
<b>7'x 4' FAUX BOXWOOD HEDGE</b>	OPTION 7	\$750.00	\$875.00		

	<b>TOTALS</b>
<b>DELIVERY/MAINTENANCE</b>	<b>\$30.00</b>
<b>SUBTOTAL</b>	
<b>SALES TAX 7.75%</b>	
<b>GRAND TOTAL</b>	

**RETURN THIS ORDER FORM WITH YOUR PAYMENT TO  
FLORAL EXPOSITIONS INC.**

SHOW NAME: \_\_\_\_\_  
LOCATION: \_\_\_\_\_  
SHOW DATES: \_\_\_\_\_ BOOTH#: \_\_\_\_\_  
BOOTH REPRESENTATIVE: \_\_\_\_\_  
ONSITE PHONE#: (       ) \_\_\_\_\_ - \_\_\_\_\_  
COMPANY \_\_\_\_\_  
CC BILLING ADDRESS: \_\_\_\_\_  
CITY: \_\_\_\_\_ STATE: \_\_\_\_\_ ZIP CODE#: \_\_\_\_\_  
AUTHORIZED SIGNATURE: \_\_\_\_\_  
PAYMENT ENCLOSED: Check: \_\_\_\_\_ CC: \_\_\_\_\_  
EMAIL ADDRESS: \_\_\_\_\_  
Credit Card#: \_\_\_\_\_  
Expiration Date: \_\_\_\_\_ Security Code (CVV)#: \_\_\_\_\_  
Name of Credit Card Holder: \_\_\_\_\_

\*If tax exempt, you must include your tax-exempt form for the state in which the show is being held.

**EXHIBITOR - ONCE YOUR ORDER IS PLACED A PAID INVOICE WILL BE EMAILED FOR YOUR FILES.**

**CALL US 407-961-6531 or EMAIL US [orders@floralexpo.net](mailto:orders@floralexpo.net)**

Custom Floral, Planters, Living Walls and more are available thirty days prior to your show. Please email us your booth rendering and we will happily discuss pricing for your custom ideas, as well as, offer unique design suggestions.

\_\_\_\_ Please have a designer see us at our booth      Date/Time \_\_\_\_\_ Representative \_\_\_\_\_  
All material and plants are rental items only. Items missing from your booth upon dismantle are the responsibility of the exhibitor and additional charges may be applied. All pricing above includes servicing throughout the show and removal at end of show. The availability of some items is subject to season and geography. All orders must be paid in full prior to show date. Adjustments cannot be made after the close of show. Orders cannot be canceled thirty days prior to the show.

*\*Discount pricing only applies to orders received and paid in full thirty days prior to Exhibitor Move In*